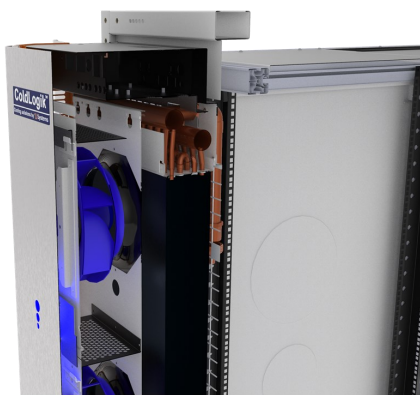


EDGE-8 Rear Door Cooler MDC

The EDGE-8 is an open architecture approach to Micro Data Center philosophy which combines all the standard EDGE™ features and incorporates the award winning ColdLogik cooling technology.

Providing a constant room temperature, this precision cooling approach is highly energy efficient, requiring no additional room air-conditioning and by being modular allows you to grow your MDC requirement as your business demand grows. This combination also delivers exceptional OPEX and CAPEX savings.

Ambient air is pulled into the cabinet via the active equipment fans. The hot exhaust air produced by the active equipment then passes over a heat exchanger matrix either by its own velocity, or, is pulled through via EC centrifugal fans mounted within the proactive door; heat is then transferred and rejected to coolant. The resulting chilled air then passes back into the room at the predetermined room ambient temperature.



Cool air coming of the RDC's mix with the hot air coming of the middle cabinet, the ColdLogik Management System housed within each RDC's ensures that a constant room temperature is maintained

One of the many benefits that the open architecture approach that rear door coolers bring is the ability to scale and configure to whatever is required of them. You can fit one to each cabinet or if the duty is low, then share one RDC to two, three and even four additional cabinets.

EDGE 8 can be sited within an existing data centre to work with existing computer room air-conditioning to provide additional cooling. They also reduce energy consumption and remove hot spots.

